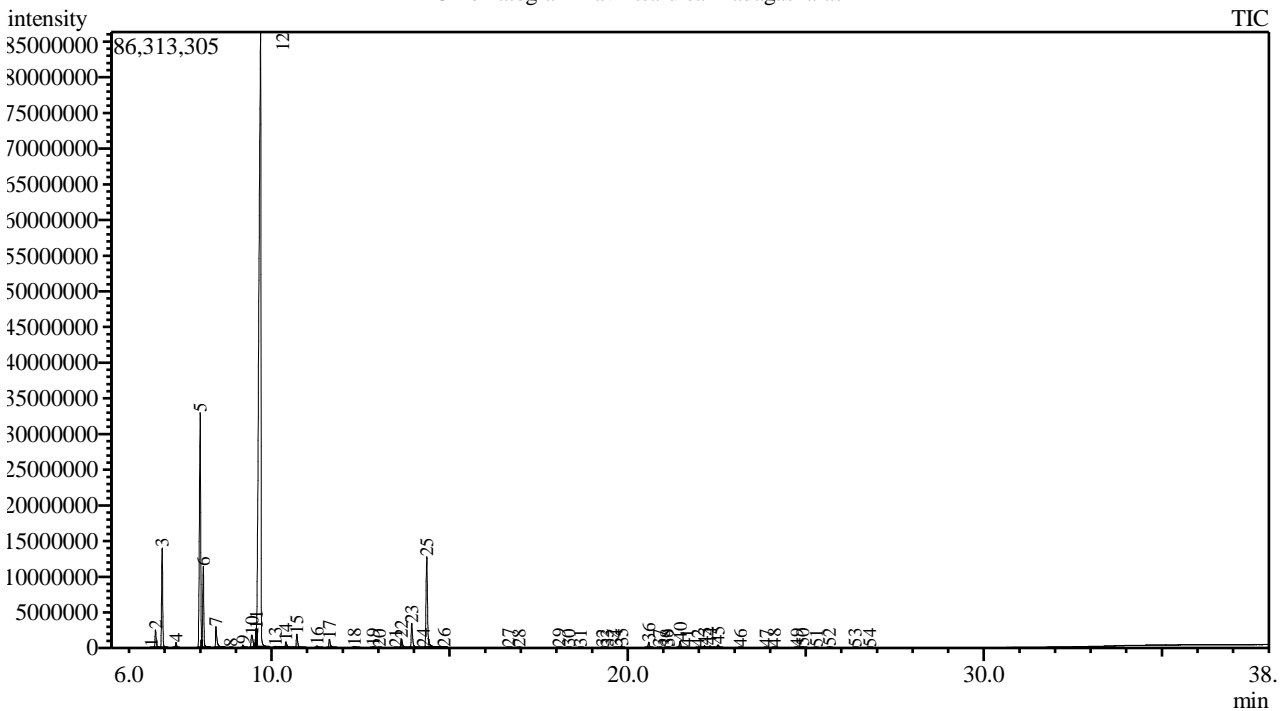


Analysis numb.: GC1443  
 Analysis date: 2022 10 05  
 Sample name: Ravintsaru ea  
 Botanical name: Ravintsara cinnamomum camphora  
 Sample batch num: RAVCC0422PFE  
 Sample origin: Madagaskaras  
 Best before: 2027 04

Chromatogram Ravintsaru ea Madagaskaras



Peak Report TIC

Peak#	R.Time	Area	Area%	Name
1	6.625	58086	0.01	Tricyclene
2	6.742	5600113	0.95	Thujene <alpha->
3	6.929	30208573	5.10	Pinene <alpha->
4	7.319	1628358	0.28	Camphene
5	7.997	82730504	13.98	Sabinene
6	8.083	24300216	4.11	Pinene <beta->
7	8.439	8166459	1.38	Myrcene
8	8.860	61875	0.01	Phellandrene <alpha->
9	9.196	1079546	0.18	Terpinene <alpha->
10	9.446	6568345	1.11	Cymene <para->
11	9.577	3373100	0.57	Sylvestrene
12	9.693	352595696	59.57	Eucalyptol
13	10.105	727044	0.12	Ocimene <(E)-, beta->
14	10.405	2366022	0.40	Terpinene <gamma->
15	10.711	5039123	0.85	Sabinene hydrate <cis->
16	11.275	772257	0.13	Terpinolene
17	11.627	3341897	0.56	Sabinene hydrate <trans->
18	12.325	440627	0.07	Menth-2-en-1-ol <cis-, para->
19	12.850	255102	0.04	Menth-2-en-1-ol <trans-, para->
20	13.029	74608	0.01	Verbenol <cis->
21	13.487	44411	0.01	Pinocarvone
22	13.651	4013254	0.68	Terpineol <delta->
23	13.939	9529830	1.61	Terpinen-4-ol
24	14.268	28578	0.00	Cryptone + Cymen-8-ol <para->

Peak#	R.Time	Area	Area%	Name
25	14.360	38562797	6.51	Terpineol <alpha->
26	14.846	103736	0.02	Piperitol <cis->
27	16.663	238710	0.04	Ascaridol glycol <trans->
28	16.946	40288	0.01	Bornyl acetate
29	18.066	183555	0.03	Unknown
30	18.349	73928	0.01	Elemene <delta->
31	18.676	50917	0.01	Cubebene <alpha->
32	19.298	70883	0.01	Ylangene <alpha->
33	19.420	26528	0.00	Copaene <alpha->
34	19.671	46279	0.01	Bourbonene <beta->
35	19.828	401768	0.07	Elemene <beta->
36	20.595	2022728	0.34	Caryophyllene
37	20.888	81109	0.01	Elemene <gamma->
38	21.099	67232	0.01	Aromadendrene
39	21.146	20893	0.00	Guaiadiene <6,9->
40	21.473	2336531	0.39	Humulene <alpha->
41	21.658	21391	0.00	Alloaromadendrene
42	21.980	73800	0.01	Selina-4,11-diene
43	22.161	722102	0.12	Germacrene D
44	22.311	754530	0.13	Selinene <beta->
45	22.540	1373834	0.23	Bicyclogermacrene
46	23.164	55544	0.01	Cadinene <delta->
47	23.883	30353	0.01	Elemol <alpha->
48	24.118	187101	0.03	Germacrene B
49	24.760	294676	0.05	Spathulenol
50	24.915	437612	0.07	Caryophyllene oxide
51	25.292	36611	0.01	Guaiol
52	25.669	286238	0.05	Humulene epoxide II
53	26.385	197099	0.03	Unknown
54	26.801	122290	0.02	Intermedeol
		591924687	100.00	

Kosmetiniai alergenai: \*-silpnas, \*\*-vidutinio stiprumo, \*\*\*- stiprus alergenai

Analiz atliko

dr. Jurga B dien