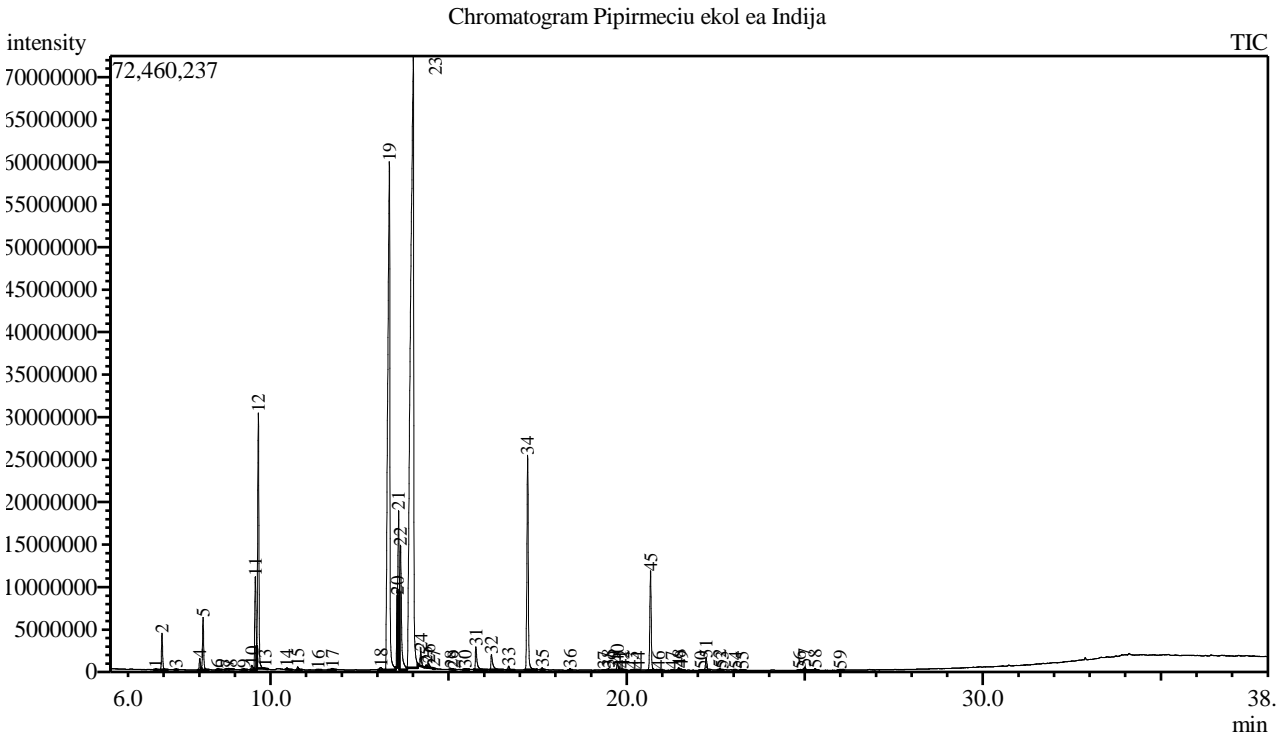


Analysis numb.: GC1372
 Analysis date: 2022 06 13
 Sample name: Pipirmeciu ekol ea
 Botanical name: Mentha piperita
 Sample batch num: PEPO0222KYE
 Sample origin: Indija
 Best before: 2027 02



Peak Report TIC

Peak#	R.Time	Area	Area%	Name
1	6.777	279315	0.03	Thujene <alpha->
2	6.952	9651258	0.92	Pinene <alpha->
3	7.348	255039	0.02	Camphene
4	8.012	3357257	0.32	Sabinene
5	8.105	14226456	1.35	Pinene <beta->
6	8.510	695497	0.07	Myrcene
7	8.774	606254	0.06	Hexanol <ethyl->
8	8.873	423790	0.04	Mentha-1(7),8-diene <para->
9	9.243	508262	0.05	Terpinene <alpha->
10	9.474	1671713	0.16	Cymene <para->
11	9.572	28060662	2.67	Limonene *
12	9.659	73848529	7.02	Eucalyptol
13	9.843	156044	0.01	Ocimene <(Z)-, beta->
14	10.458	716298	0.07	Terpinene <gamma->
15	10.761	1080419	0.10	Sabinene hydrate <cis->
16	11.336	255173	0.02	Terpinolene
17	11.729	880837	0.08	Linalool*
18	13.095	1402945	0.13	Terpineol <trans-dihydro-alpha-> + Isopulegol
19	13.337	250779130	23.82	Menthone
20	13.563	11393532	1.08	Menthofuran
21	13.598	16953297	1.61	Isomenthone
22	13.652	45651685	4.34	Neomenthol
23	14.009	448875133	42.64	Menthol
24	14.220	4246706	0.40	Isomenthol

Peak#	R.Time	Area	Area%	Name
25	14.371	771891	0.07	Neoisomenthol
26	14.436	1589779	0.15	Terpineol <alpha->
27	14.586	129161	0.01	Myrtenol
28	15.072	235348	0.02	Unknown
29	15.157	68930	0.01	Cumin aldehyde
30	15.463	722326	0.07	Carvone
31	15.766	8899072	0.85	Pulegone
32	16.204	6835629	0.65	Piperitone
33	16.690	1270304	0.12	Neomenthyl acetate
34	17.220	69550595	6.61	Menthyl acetate
35	17.628	599060	0.06	Isomenthyl acetate
36	18.408	519379	0.05	Elemene <delta->
37	19.366	206593	0.02	Ylangene <alpha->
38	19.490	661974	0.06	Copaene <alpha->
39	19.646	232376	0.02	Unknown
40	19.743	2124862	0.20	Bourbonene <beta->
41	19.799	100352	0.01	Cubebene <beta->
42	19.897	360592	0.03	Elemene <beta->
43	20.157	86574	0.01	Cyperene
44	20.322	142965	0.01	Caryophyllene <(Z)->
45	20.672	31990244	3.04	Caryophyllene <(E)->
46	20.893	305931	0.03	Copaene <beta->
47	21.282	59866	0.01	Aromadendrene
48	21.463	920028	0.09	Farnesene <(E)-, beta->
49	21.542	407153	0.04	Humulene <alpha->
50	22.087	108885	0.01	Muurolene <gamma->
51	22.232	4266860	0.41	Germacrene D
52	22.616	558771	0.05	Bicyclgermacrene
53	22.676	34062	0.00	Muurolene <alpha->
54	23.050	27404	0.00	Cadinene <gamma->
55	23.236	260044	0.02	Cadinene <delta->
56	24.850	118004	0.01	Spathulenol
57	25.002	1310790	0.12	Caryophyllene oxide
58	25.289	795822	0.08	Viridiflorol
59	25.990	440017	0.04	Unknown
		1052686874	100.00	

Kosmetiniai alergenai: *-silpnas, **-vidutinio stiprumo, ***- stiprus alergenai

Analiz atliko

dr. Jurga B dien