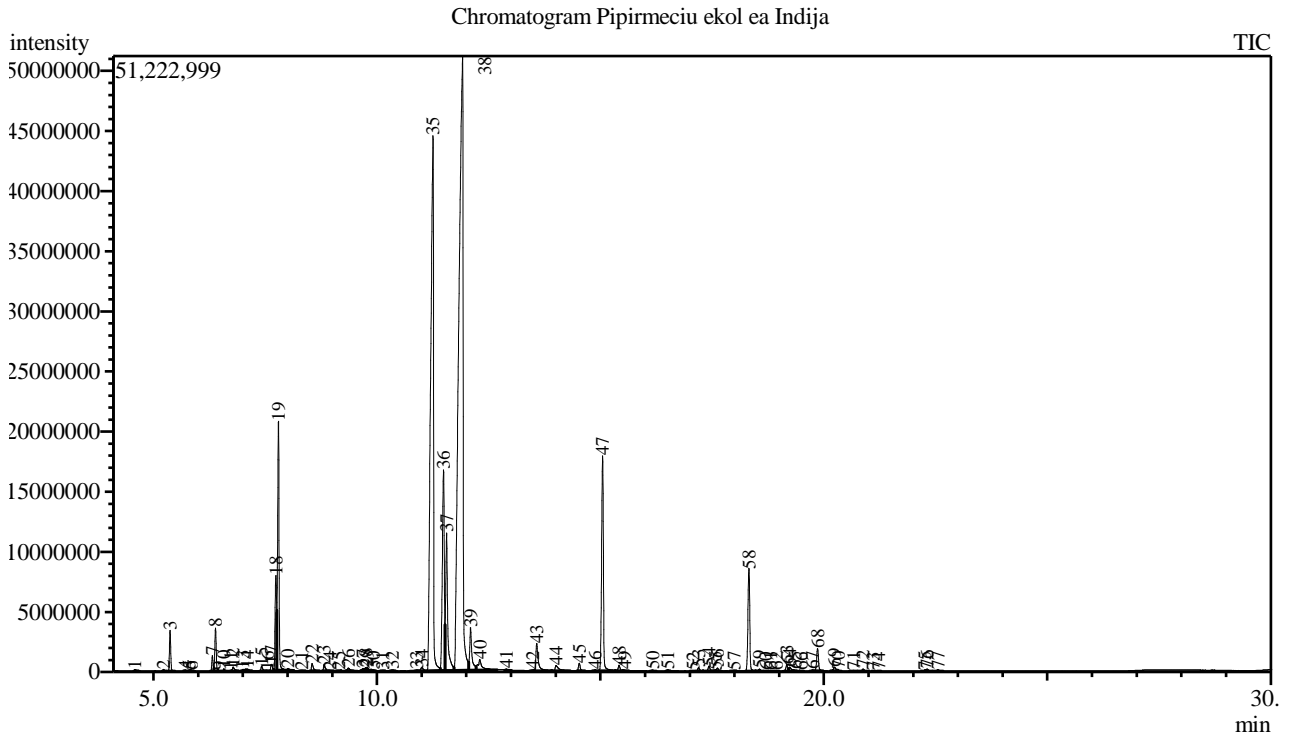


Analysis numb.: GC1746
 Analysis date: 2024 02 21
 Sample name: Pipirmeciu ekol ea
 Botanical name: Mentha piperita
 Sample batch num: LOT B634031
 Sample origin: Indija
 Best before: 2025 11 14



Peak Report TIC

Peak#	R.Time	Area	Area%	Name
1	4.584	300158	0.04	Tetrahydrofuran <2,5-diethyl->
2	5.224	261347	0.03	Thujene <alpha->
3	5.371	6209341	0.75	Pinene <alpha->
4	5.714	152014	0.02	Camphene
5	5.794	159162	0.02	Cyclohexanone <3-methyl->
6	5.853	94658	0.01	Thuja-2,4(10)-diene
7	6.317	2574663	0.31	Sabinene
8	6.388	7250393	0.87	Pinene <beta->
9	6.467	111489	0.01	Pinane <cis->
10	6.576	393026	0.05	Menth-3-ene <para->
11	6.723	88789	0.01	Menthane <para->
12	6.781	980871	0.12	Myrcene
13	7.000	448570	0.05	3-Octanol
14	7.097	538766	0.06	Phellandrene <alpha->
15	7.418	971918	0.12	Terpinene <alpha->
16	7.552	82685	0.01	Menth-1-ene <para->
17	7.637	1414495	0.17	Cymene <para->
18	7.739	18359209	2.21	Limonene*
19	7.795	45043800	5.41	Eucalyptol
20	8.008	443103	0.05	Ocimene <(Z)-, beta->
21	8.314	100821	0.01	Ocimene <(E)-, beta->
22	8.549	1735607	0.21	Terpinene <gamma->
23	8.818	1408163	0.17	Sabinene hydrate <cis->
24	8.953	104795	0.01	Linalool oxide <cis->

Peak#	R.Time	Area	Area%	Name
25	9.143	212992	0.03	Octanol
26	9.359	649829	0.08	Terpinolene
27	9.689	438459	0.05	Linalool <tetrahydro->
28	9.750	328976	0.04	Linalool*
29	9.777	400985	0.05	methyl butyl-2-methyl butyrate <2->
30	9.918	195059	0.02	Isovalerate <2-methylbutyl->
31	10.124	83358	0.01	Fenchyl alcohol
32	10.340	238254	0.03	Menth-2-en-1-ol <cis-, para->
33	10.894	152587	0.02	Sabinol <trans->
34	11.002	875951	0.11	Isopulegol
35	11.255	194850945	23.42	Menthone
36	11.491	50362291	6.05	Isomenthone
37	11.560	35191728	4.23	Neomenthol
38	11.917	337858051	40.60	Menthol
39	12.097	11926722	1.43	Isomenthol
40	12.303	5461236	0.66	Terpineol <alpha->
41	12.897	191530	0.02	Unknown
42	13.487	200016	0.02	Butanoate <2-methyl-, (3Z)-hexenyl->
43	13.576	8207646	0.99	Pulegone
44	14.010	2325346	0.28	Piperitone
45	14.529	1623847	0.20	Menthyl acetate
46	14.884	204236	0.02	Unknown
47	15.051	49521313	5.95	Isomenthyl acetate
48	15.419	1372665	0.16	Neoisomenthyl acetate
49	15.540	152974	0.02	Dihydro carveol acetate <iso->
50	16.169	225824	0.03	Elemene <delta->
51	16.507	207218	0.02	Cubebene <alpha->
52	17.072	123413	0.01	Ylangene <alpha->
53	17.197	744658	0.09	Copaene <alpha->
54	17.431	1157182	0.14	Bourbonene <beta->
55	17.577	45599	0.01	Cubebene <beta->
56	17.620	569985	0.07	Elemene <beta->
57	17.995	163729	0.02	Caryophyllene <(Z)->
58	18.325	24024065	2.89	Caryophyllene <(E)->
59	18.561	552673	0.07	Copaene <beta->
60	18.703	77565	0.01	Bergamotene <alpha-, trans->
61	18.809	135858	0.02	Aromandendrene
62	18.937	153903	0.02	Isogermacrene D
63	19.173	1424859	0.17	Humulene <alpha->
64	19.238	1163756	0.14	Farnesene <(E)-, beta->
65	19.353	224709	0.03	Alloaromadendrene
66	19.491	78332	0.01	Muurola-4(14),5-diene <cis->
67	19.747	241172	0.03	Murolene <gamma->
68	19.861	5246851	0.63	Germacrene D
69	20.236	1210508	0.15	Bicyclogermacrene
70	20.330	161478	0.02	Murolene <alpha->
71	20.668	230330	0.03	Cadinene <gamma->
72	20.881	537575	0.06	Cadinene <delta->
73	21.100	17384	0.00	Cadina-1,4-diene <trans->
74	21.229	32323	0.00	Cadinene <alpha->
75	22.263	167758	0.02	Spathulenol
76	22.314	522717	0.06	Caryophyllene oxide
77	22.552	387645	0.05	Viridiflorol
		832083908	100.00	

Kosmetiniai alergenai: *-silpnas, **-vidutinio stiprumo, ***- stiprus alergenai

Analiz atliko

dr. Jurga B dien