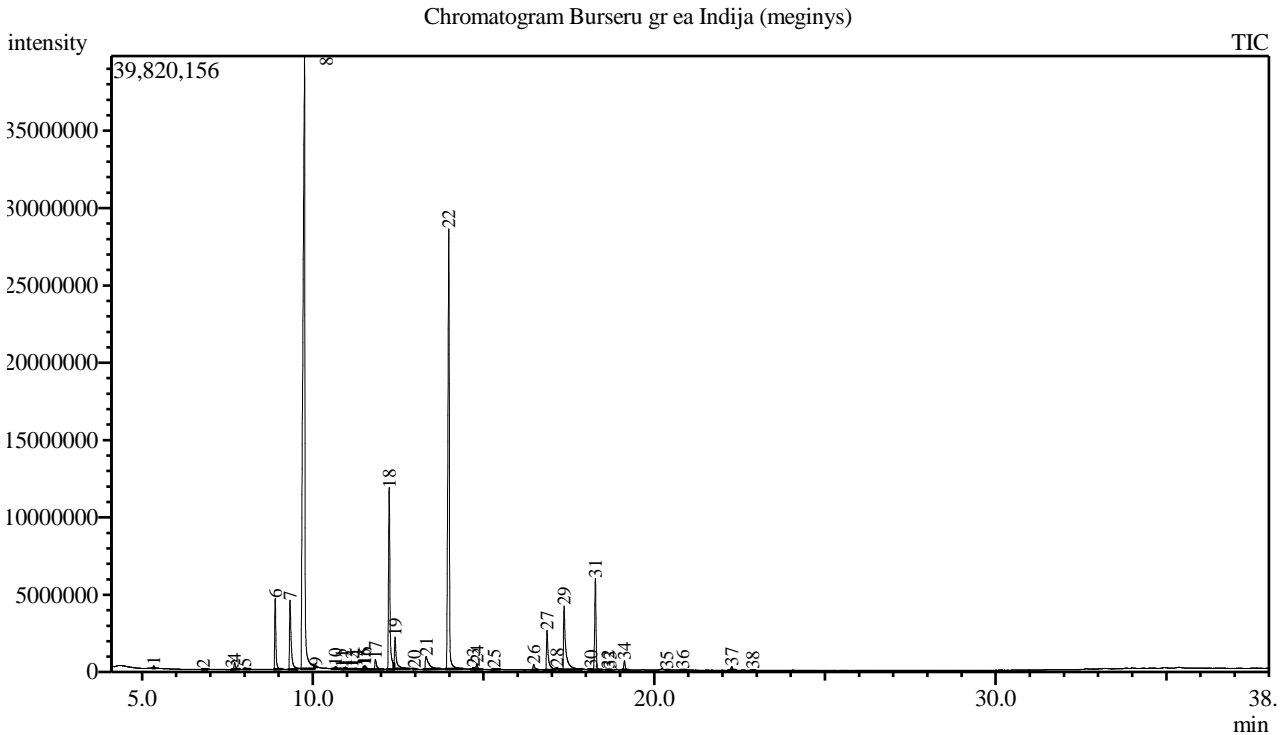


Analysis numb.: GC1725  
 Analysis date: 2024 01 31  
 Sample name: Bursera ea (meginys)  
 Botanical name: Bursera delpechiana (Linaloe Berry)  
 Sample batch num: LOT SO-170/23-24  
 Sample origin: Indija  
 Best before:



Peak Report TIC

Peak#	R.Time	Area	Area%	Name
1	5.345	278631	0.07	Pinene <alpha->
2	6.794	308868	0.08	Myrcene
3	7.637	88992	0.02	Cymene <para->
4	7.709	1423890	0.37	Limonene*
5	8.003	415589	0.11	Ocimene <(E)-, beta->
6	8.900	11131541	2.91	Linalool oxide <cis->
7	9.336	15121583	3.96	Linalool oxide <trans->
8	9.760	162813724	42.63	Linalool*
9	10.083	37386	0.01	Fenchyl alcohol
10	10.671	626700	0.16	Terpin-3-en-1-ol
11	10.865	62474	0.02	Camphor
12	10.957	541376	0.14	Terpineol <beta-, cis->
13	11.157	95324	0.02	Menthone
14	11.269	274744	0.07	Isoborneol
15	11.500	282700	0.07	Terpineol <beta-, trans->
16	11.524	1078900	0.28	Borneol
17	11.838	2329247	0.61	Terpinen-4-ol
18	12.242	35072629	9.18	Terpineol <alpha->
19	12.411	8029299	2.10	Terpineol <gamma->
20	12.970	47929	0.01	Fenchyl acetate <exo->
21	13.325	5928674	1.55	Nerol
22	13.988	85591073	22.41	Linalyl acetate
23	14.706	479157	0.13	Lavandulyl acetate
24	14.808	1097895	0.29	Isopulegyl acetate <iso->

Peak#	R.Time	Area	Area%	Name
25	15.305	519765	0.14	Geranyl formate
26	16.472	1214537	0.32	Terpinyl acetate <alpha->
27	16.861	9471532	2.48	Neryl acetate
28	17.156	277531	0.07	Copaene <alpha->
29	17.363	18393192	4.82	Geranyl acetate
30	18.145	171196	0.04	Caryophyllene <(Z)->
31	18.281	15871817	4.16	Caryophyllene <(E)->
32	18.653	72930	0.02	Aromandendrene
33	18.715	28359	0.01	Seychellene
34	19.133	1621012	0.42	Humulene <alpha->
35	20.367	63614	0.02	Bulnesene <alpha->
36	20.841	169562	0.04	Cadinene <delta->
37	22.274	818279	0.21	Caryophyllene oxide
38	22.880	68962	0.02	Humulene epoxide II
		381920613	100.00	

Kosmetiniai alergenai: \*-silpnas, \*\*-vidutinio stiprumo, \*\*\*- stiprus alergenai

Analiz atliko

dr. Jurga B dien